



Angie's

POOL & SPA, INC.

Custom In-Ground Swimming Pools

2022 HOT TUBS

Indiana's finest spa showroom and
highest rated spa service

3130 Meridian Parke Dr. Suite A
Greenwood, IN 46142

www.angiespools.com

317.881.1257



OUR PURPOSE

WE ARE HERE FOR YOU

Our difference is our dedication to quality over quantity. We care about your experience and that you are only provided the best products. It's our goal to help you maintain and protect your investment to last a lifetime.

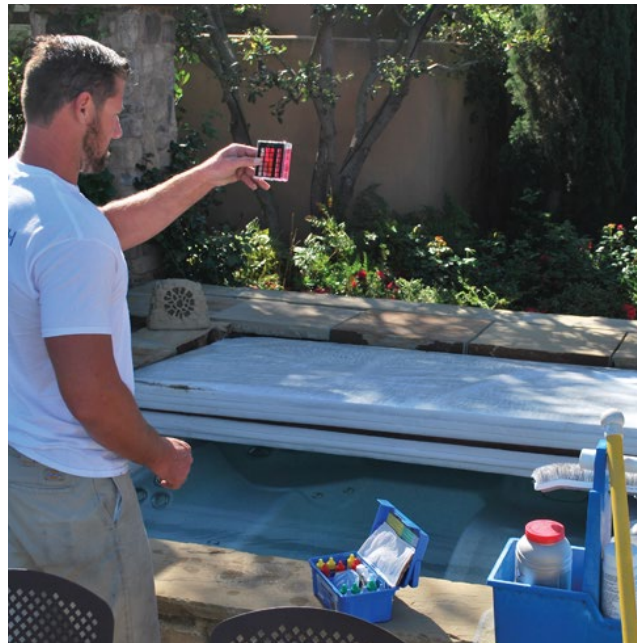


DELIVERY

When you purchase a spa from us you receive free 48 hour delivery by licensed and insured movers. Here To There Movers deliver within 9 surrounding counties from our location. (Excluding Cash & Carry Models)

OPERATING INSTRUCTIONS

We also include operating instructions from one of our Pool & Spa Alliance Certified Spa Technicians once your spa is up in running.



WARRANTY

Our hot tubs have manufacture warranties from 1 year up to lifetime. See hot tub collections for more details.

WATER CARE

We offer free water tests in store where our team will provide you with instructions. Or you can schedule for us to come out weekly!



CERTIFIED TECHS

Our Pool & Hot Tub Alliance Certified Spa Technicians are available to help you with any troubleshooting or check up needed on your hot tub.

VIRTUAL SHOWROOM APPOINTMENTS

Set up a time to chat virtually with one of our team members. We'll give you a tour of our spa showroom and show you popular features.



THE BRANDS



STRONG SPAS

If you're looking for a simple and durable hot tub that's efficient, Strong Spas are perfect for you. With their easy plug and play set up you can enjoy your retreat quicker than ever. The popular Dura-Shield Hardcover insulation, rotational molding and fully enclosed pedestal base guarantees the strength of these hot tubs. Strong Spas are engineered for life and backed with a lifetime shell warranty.

DURASPORT SERIES



Whether you like to soak alone or with family and friends, the DuraSport Series gives you a soothing, relaxing hydrotherapy experience every time. Budget friendly and durable.

SUMMIT & EMBARK SERIES



Combining eye-catching curb appeal with power and efficiency, the Summit & Embark Series are designed to bring you peace of mind and restoration for your body. Quality built and beautiful.

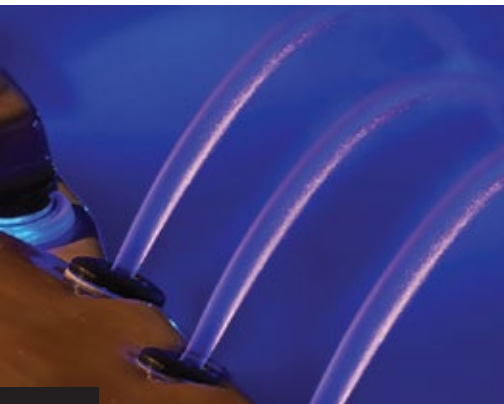
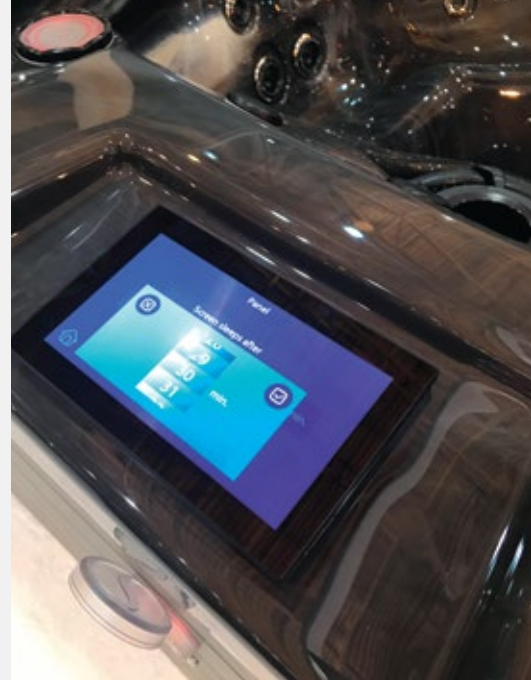
PREMIUM SERIES



The Premium Series delivers luxury beyond belief. Superior hydrotherapy, extravagant features and lasting quality bring you this indulgent spa experience.

S H O W R O O M
M O D E L S





PREMIUM MADRID 60

PART#: SSPREMADRID60SC
SN#: 022121-A32
MSRP: \$18,335.23
ANGIE'S PRICE: \$14,104.02

WARRANTY

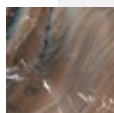
DuraShield HardCover: Lifetime Prorated Warranty (2 years hardware & seals)
 Dura-Last Acrylic Cabinet: Lifetime Warranty parts & labor
 Acrylic Shell Surface: 5 years parts & labor
 Plumbing & Equipment: 3 years parts & labor
 LED Lighting: 1 year
 Ozonators: 1 year
 Sound System: 1 year
 Replacement Only: 1 year

*Warranty does not cover damage due to abuse, vandalism, or acts of nature. Warranty is void if electrical connections are not made by a qualified, licensed residential electrician.

FREE DELIVERY WITHIN 9 SURROUNDING COUNTIES
 (outside area to be quoted)



PRODUCT SPECS



Soft Cover Included
 Cobblestone/Tuscan Sun
 Seating Capacity 5-6 Lounger
 Jet Count 60 SS Two-Tone
 including Jumbo Foot Jet
 Dimensions 91 x 91 x 36
 Volts 240V
 2 x 5BHP + Diverter
 5" Underwater LED
 "S" LED Controls
 Cabinet LEDs
 Molded LED Waterfall
 2 LED Water Columns
 DURA-BASE® Upgrade Included
 Color Touchscreen Included
 400 Gallons
 950 LBS Dry Weight
 Made In - Northumberland, PA



2021 EMBARK EL40

PART#: SSEMEL40
SN#: 022121-A03
MSRP: \$12,259.03
ANGIE'S PRICE: \$9,677.97

WARRANTY

DuraShield HardCover: Lifetime Prorated Warranty (2 years hardware & seals)
 Acrylic Shell Surface: 5 years parts & labor
 Spa Cabinet: 7 years parts & labor
 Plumbing & Equipment: 2 years parts
 LED Lighting: 1 year
 Ozonators: 1 year
 Replacement Only: 1 year

*Warranty does not cover damage due to abuse, vandalism, or acts of nature. Warranty is void if electrical connections are not made by a qualified, licensed residential electrician.

FREE DELIVERY WITHIN 9 SURROUNDING COUNTIES
(outside area to be quoted)



PRODUCT SPECS



Confer Grey/Sterling Silver
 Seating Capacity 5 Lounger
 Jet Count 40 Stainless Steel
 Featuring Built In Ice Bucket with Lid/Tray
 Dimensions 74 x 74 x 36
 Volts 240V
 1 x 5BHP
 3" Underwater LED
 "S" LED Controls
 2 LED Water Columns
 Ozone Included
 Soft Cover Included
 300 Gallons
 600 LBS. Dry Weight
 Made In - Northumberland, PA



PREMIUM SERIES VIENNA 60

Standard Specifications

Part#: SSVIENNA60	
SN#: 101421-A27	
Seating Capacity	6-7
Jet Count	60 SS Two-Tone including Jumbo Foot Jet
Seating	Non-Lounger
Dimensions	91x91x36h
Volts	240V
Pumps	2 x 5BHP + Diverter
Lights	5" Underwater LED "S" LED Controls Cabinet LEDs
Waterfall	Molded LED Waterfall 2 LED Water Columns
Ozone	
DURA-BASE® Upgrade Color	Included
Touchscreen Bluetooth Stereo	Included
+ 4 speakers WiFi App for	Included
Remote Access UV/O ³ System	Included
DURA-SHIELD® HardCover	



ANGIE'S PRICE: \$17,001.93

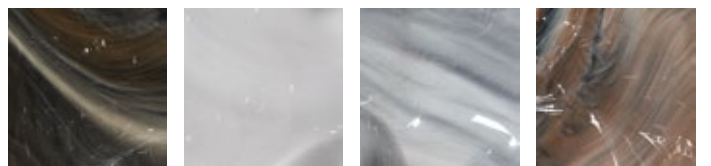
*with all the options \$17,660.10 (Dura-Shield HardCover, UV /O3, Bluetooth, WiFi)
**prices subject to change



Cobblestone

Grey Granite

Millstone



Midnight Canyon

Sterling Silver

Storm Clouds

Tuscan Sun





DE SUMMIT S40

PART#: SSDESUMS40

SN#: 022121-A23

MSRP: \$18,070.10

ANGIE'S PRICE: \$13,900.08

WARRANTY

DuraShield HardCover: Lifetime Prorated Warranty (2 years hardware & seals)

Acrylic Shell Surface: 5 years parts & labor

Spa Cabinet: 7 years parts & labor

Plumbing & Equipment: 2 years parts

LED Lighting: 1 year

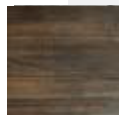
Ozonators: 1 year

Replacement Only: 1 year

*Warranty does not cover damage due to abuse, vandalism, or acts of nature. Warranty is void if electrical connections are not made by a qualified, licensed residential electrician.



PRODUCT SPECS



Mocha Brown/Sterling Silver

Seating Capacity 6

Jet Count 40 SS Two-Tone

Dimensions 74 x 74 x 36

Volts 240V

5BHP 2 Speed + Circulation Pump

Underwater LED

"S" LED Controls

Cabinet LEDs

2 LED Water Columns

DuraBase Upgrade Included

Color Touchscreen Included DuraShield

Hardcover Included Bluetooth Stereo

System Included WiFi App for Remote

Access Included UV/O³ System Included

300 Gallons

600 LBS Dry Weight

Made In - Northumberland, PA

FREE DELIVERY WITHIN 9 SURROUNDING COUNTIES

(outside area to be quoted)



DE SUMMIT SL50

PART#: SSDESUMSL50
SN#: 022121-A20
MSRP: \$22,443.33
ANGIE'S PRICE: \$17,606.33

WARRANTY

DuraShield HardCover: Lifetime Prorated Warranty (2 years hardware & seals)
 Acrylic Shell Surface: 5 years parts & labor
 Spa Cabinet: 7 years parts & labor
 Plumbing & Equipment: 2 years parts
 LED Lighting: 1 year
 Ozonators: 1 year
 Replacement Only: 1 year

*Warranty does not cover damage due to abuse, vandalism, or acts of nature. Warranty is void if electrical connections are not made by a qualified, licensed residential electrician.

FREE DELIVERY WITHIN 9 SURROUNDING COUNTIES
(outside area to be quoted)



PRODUCT SPECS



Midnight Canyon & Brushed Nickel w/
 Carbon Fiber Corners
 Seating Capacity 5 Lounger
 Jet Count 50 SS Two-Tone
 Dimensions 85 x 85 x 36
 Volts 240V
 5BHP 2 Speed + Circulation Pump
 Underwater LED
 "S" LED Controls
 Cabinet LEDs
 2 LED Water Columns
 DuraBase Upgrade Included
 Color Touchscreen Included DuraShield
 Hardcover Included Bluetooth Stereo
 System Included WiFi App for Remote
 Access Included UV/O³ System Included
 300 Gallons
 600 LBS Dry Weight
 Made In - Northumberland, PA



DE SUMMIT SL60

PART#: SSDESUSL60
SN#: 120820-A14
MSRP: \$23,218.10
ANGIE'S PRICE: \$18,827.03

WARRANTY

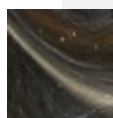
DuraShield HardCover: Lifetime Prorated Warranty (2 years hardware & seals)
 Acrylic Shell Surface: 5 years parts & labor
 Spa Cabinet: 7 years parts & labor
 Plumbing & Equipment: 2 years parts
 LED Lighting: 1 year
 Ozonators: 1 year
 Replacement Only: 1 year

*Warranty does not cover damage due to abuse, vandalism, or acts of nature. Warranty is void if electrical connections are not made by a qualified, licensed residential electrician.

FREE DELIVERY WITHIN 9 SURROUNDING COUNTIES
(outside area to be quoted)



PRODUCT SPECS



Coastal Grey/Midnight Canyon
 Seating Capacity 6 Lounger
 Jet Count 60 SS Two-Tone
 Dimensions 91 x 91 x 36
 Volts 240V
 2 x 5BHP + Circulation Pump
 5" Underwater LED
 "S" LED Controls
 Lighted Cup Holders
 Cabinet LEDs
 3 LED Water Columns
 DuraBase Upgrade Included
 Color Touchscreen Included
 DuraShield Hardcover Included
 Bluetooth Stereo System Included
 WiFi App for Remote Access Included
 UV/O³ System Included
 480 Gallons
 950 LBS Dry Weight
 Made In - Northumberland, PA



2021 DE DURASPORT G2 LUXURY 36

PART #: SSG2L220HCCP
SN#: 022121-R49
MSRP: \$12,256.45
ANGIE'S PRICE: \$9,428.04

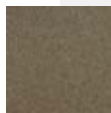
WARRANTY

DuraShield HardCover: Lifetime Prorated Warranty (2 years hardware & seals)
 Rotationally Molded Spa Shell & Cabinet: Lifetime Warranty parts & labor
 Plumbing & Equipment: 2 years parts
 LED Lighting: 1 year
 Ozonators: 1 year
 Replacement Only: 1 year

*Warranty does not cover damage due to abuse, vandalism, or acts of nature. Warranty is void if electrical connections are not made by a qualified, licensed residential electrician.



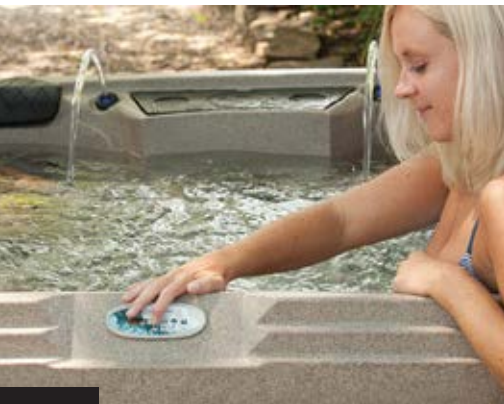
PRODUCT SPECS



Cobblestone / Portabello Rock
 Seating Capacity 6 Lounger + Captain's Chairs
 Jet Count 36 Stainless Steel
 Featuring Foldaway Step & Towel Warmer
 Dimensions 74 x 74 x 32
 Volts 240V
 5BHP
 Underwater LED
 8 LED Points
 2 LED Water Columns
 Ozone Included
 DuraShield Hardcover Included
 300 Gallons
 475 LBS Dry Weight
 Made In - Northumberland, PA

FREE DELIVERY WITHIN 9 SURROUNDING COUNTIES

(outside area to be quoted)



2021 DE DURASPORT G2 L28



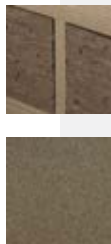
PRODUCT SPECS

PART#: SSDG2L28
SN#: 091221-R73
MSRP: \$11,994.00
ANGIE'S PRICE: \$8,045.97

WARRANTY

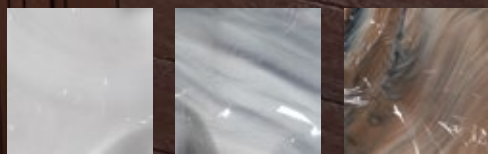
Rotationally Molded Spa Shell & Cabinet: Lifetime
 Warranty parts & labor
 Plumbing & Equipment: 2 years parts
 LED Lighting: 1 year
 Ozonators: 1 year
 Replacement Only: 1 year

*Warranty does not cover damage due to abuse, vandalism, or acts of nature. Warranty is void if electrical connections are not made by a qualified, licensed residential electrician.

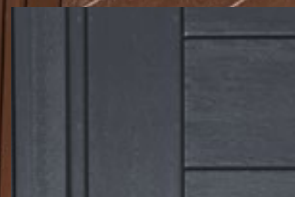


Cobblestone / Portabello Rock
 Seating Capacity 5 Lounger + Captain's
 Chairs Jet Count 28 Stainless Steel
 Featuring Foldaway Step & Towel Warmer
 Dimensions 74 x 74 x 32
 Volts 120/240V Convertible
 5BHP
 Underwater LED
 8 LED Points
 2 LED Water Columns
 Ozone Included
 Soft cover Included
 300 Gallons
 600 LBS Dry Weight
 Made In - Northumberland, PA

FREE DELIVERY WITHIN 9 SURROUNDING COUNTIES
(outside area to be quoted)



Sterling Silver Storm Clouds* Tuscan Sun*



Also in Gray

EMBARK SERIES EL70

Standard Specifications

Seating Capacity	5
Jet Count	70 Stainless Steel
Seating	Lounger
Dimensions	85x85x36h
Volts	240V
Pumps	2 x 5BHP
Lights	Underwater LED "S" LED Controls
Waterfall	Cascade
Ozone	Included
SoftCover	Included

Part#: SSEMES70
SN# 070621-A05072821A75

ANGIE'S PRICE: \$11,916.47

*with Tuscan Sun or Storm Clouds shell upgrade \$11,924.04 **prices subject to change



Roll-over neck/shoulder jets



LED lighted controls



Stainless steel jets



Also in Espresso

EMBARK SERIES

EL90

Standard Specifications

Seating Capacity	6
Jet Count	90 Stainless Steel Lounger
Seating	91x91x36h
Dimensions	240V
Volts	2 x 5BHP + Blower Pump
Pumps	Underwater LED
Lights	"S" LED Controls
Waterfall	Cascade
Ozone	Included
SoftCover	Included

Part#: SSEMBEL90

SN#: 100721-A09

ANGIE'S PRICE: \$13,137.47

*with Tuscan Sun or Storm Clouds shell upgrade
\$13,112.04 **prices subject to change



E90L features our most spacious interior and Wrap-Around Leg Jets in the Lounger



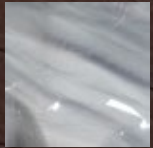
LED lighted controls



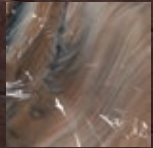
Stainless steel jets



Sterling Silver



Storm Clouds*



Tuscan Sun*



Also in Gray

EMBARK SERIES

E70

Standard Specifications

Seating Capacity	6
Jet Count	70 Stainless Steel
Seating	Non-Lounger
Dimensions	85x85x36h
Volts	240V
Pumps	2 x 5BHP
Lights	Underwater LED "S" LED Controls
Waterfall	Cascade
Ozone	Included
SoftCover	Included

Part#:SSEMES70

SN#: 101421-A29

ANGIE'S PRICE: \$12,117.93

*with Tuscan Sun or Storm Clouds shell upgrade \$11,924.04

**prices subject to change



LED lighted controls



Stainless steel jets



Roll-over neck/shoulder jets



SUMMIT SERIES

S50

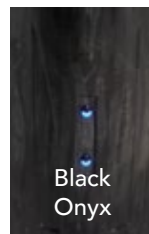
Standard Specifications

Part#: SDESUS50
SN#: 101421-A18

Seating Capacity	6
Jet Count	50 SS Two-Tone
Seating	Non-Lounger
Dimensions	85x85x36h
Volts	240V
Pumps	2 x 5BHP + Circ Pump
Lights	Underwater LED "S" LED Controls Lighted Cup Holders Cabinet LEDs
Waterfall	3 LED Water Columns
Ozone	Included
DURA-BASE® Upgrade	Included
Color Touchscreen	Included
DURA-SHIELD® HardCover	Included
Bluetooth Stereo System	Optional (\$493.02)
WiFi App for Remote Access	Optional (\$295.02)
UV/O ³ System	Optional (\$196.02)



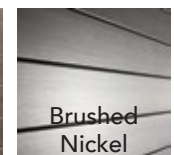
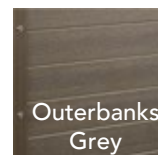
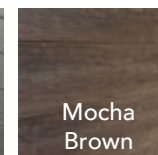
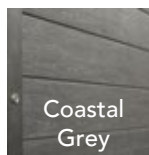
Corners:



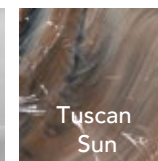
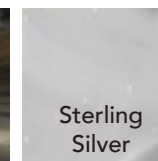
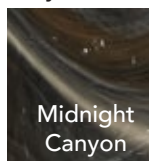
Cabinet/Corner Options:

- Mocha Brown/Coastal Grey Standard
- Brushed Nickel (Black Onyx/Carbon Fiber) \$592.02
- Coastal Grey (Carbon Fiber) \$394.02
- Outerbanks Grey (Black Onyx) \$394.02

Cabinets:

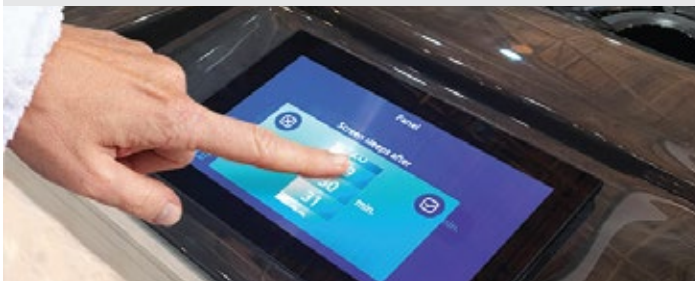


Acrylic Shells:



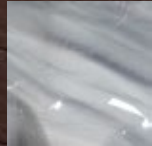
ANGIE'S PRICE: \$16,997.86

*with all the options \$16,672.08 (UV /O3, Bluetooth, WiFi)
**prices subject to change

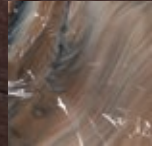




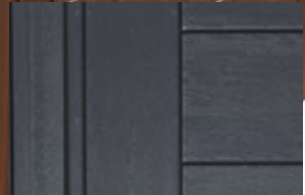
Sterling Silver



Storm Clouds*



Tuscan Sun*



Also in Gray

EMBARK SERIES

EL60

Standard Specifications

Seating Capacity	5
Jet Count	60 Stainless Steel
Seating	Lounger
Dimensions	85x85x36h
Volts	240V
Pumps	1 x 5BHP + Blower Pump
Lights	Underwater LED "S" LED Controls
Waterfall	Cascade
Ozone	Included
SoftCover	Included

Part#: SSEMEL60

SN#: 101421-A26

ANGIE'S PRICE: \$11,303.93

*with Tuscan Sun or Storm Clouds shell upgrade \$11,132.04

**prices subject to change



Roll-over neck/shoulder jets



LED lighted controls



Stainless steel jets

SPECIAL ORDER

JUST FOR YOU





2021 DE DURASPORT G2 LUXURY 28

PART#: SSG2LEGEND28
SN#: 022121-R59
MSRP: \$11,999.05
ANGIE'S PRICE: \$9,472.43

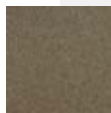
WARRANTY

DuraShield HardCover: Lifetime Prorated Warranty (2 years hardware & seals)
 Rotationally Molded Spa Shell & Cabinet: Lifetime Warranty parts & labor
 Plumbing & Equipment: 2 years parts
 LED Lighting: 1 year
 Ozonators: 1 year
 Replacement Only: 1 year

*Warranty does not cover damage due to abuse, vandalism, or acts of nature. Warranty is void if electrical connections are not made by a qualified, licensed residential electrician.



PRODUCT SPECS



Cobblestone / Portabello Rock
 Seating Capacity 6 Lounger + Captain's Chairs
 Jet Count 28 Stainless Steel
 Featuring Foldaway Step & Towel Warmer
 Dimensions 74 x 74 x 32
 Volts 120/240V Convertible
 5BHP
 Underwater LED
 8 LED Points
 2 LED Water Columns
 Ozone Included
 DuraShield Hardcover Included
 300 Gallons
 475 LBS Dry Weight
 Made In - Northumberland, PA

FREE DELIVERY WITHIN 9 SURROUNDING COUNTIES

(outside area to be quoted)



DE SUMMIT SL40

PART#: SSDESPSSL40

SN#: 071520-A49

MSRP: \$18,582.33

ANGIE'S PRICE: \$14,294.10

WARRANTY

DuraShield HardCover: Lifetime Prorated Warranty (2 years hardware & seals)

Acrylic Shell Surface: 5 years parts & labor

Spa Cabinet: 7 years parts & labor

Plumbing & Equipment: 2 years parts

LED Lighting: 1 year

Ozonators: 1 year

Replacement Only: 1 year

*Warranty does not cover damage due to abuse, vandalism, or acts of nature. Warranty is void if electrical connections are not made by a qualified, licensed residential electrician.

FREE DELIVERY WITHIN 9 SURROUNDING COUNTIES

(outside area to be quoted)



PRODUCT SPECS



Sterling Silver & Coastal Grey w/ Carbon Fiber Corners

Seating Capacity 5 Lounger

Jet Count 40 SS Two-Tone

Dimensions 74 x 74 x 36

Volts 240V

5BHP 2 Speed + Circulation Pump

Underwater LED

"S" LED Controls

Cabinet LEDs

2 LED Water Columns

DuraBase Upgrade Included

Color Touchscreen Included

DuraShield Hardcover Included

Bluetooth Stereo System Included

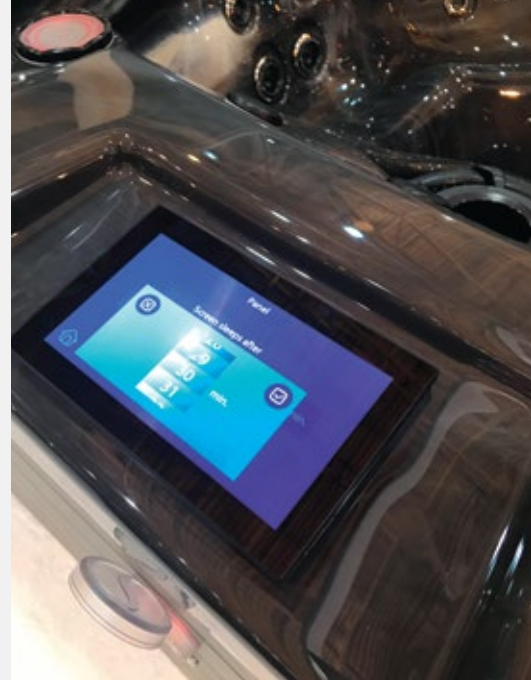
WiFi App for Remote Access Included

UV/O³ System Included

300 Gallons

600 LBS Dry Weight

Made In - Northumberland, PA



PREMIUM MADRID 60

WIFI/BLUETOOTH/OZONE/UV

PART#: SSPREMADRID60

SN#: 121520-A17

MSRP: \$22,958.13

ANGIE'S PRICE: \$17,660.10

WARRANTY

DuraShield HardCover: Lifetime Prorated Warranty (2 years hardware & seals)

Dura-Last Acrylic Cabinet: Lifetime Warranty parts & labor

Acrylic Shell Surface: 5 years parts & labor

Plumbing & Equipment: 3 years parts & labor

LED Lighting: 1 year

Ozonators: 1 year

Sound System: 1 year

Replacement Only: 1 year

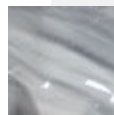
*Warranty does not cover damage due to abuse, vandalism, or acts of nature. Warranty is void if electrical connections are not made by a qualified, licensed residential electrician.

FREE DELIVERY WITHIN 9 SURROUNDING COUNTIES

(outside area to be quoted)



PRODUCT SPECS



Grey Granite/Storm Clouds
Seating Capacity 5-6 Lounger
Jet Count 60 SS Two-Tone including

Jumbo Foot Jet

Dimensions 91 x 91 x 36

Volts 240V

2 x 5BHP + Diverter

5" Underwater LED

"S" LED Controls

Cabinet LEDs

Molded LED Waterfall

2 LED Water Columns

DURA-BASE® Upgrade Included

Color Touchscreen Included

Bluetooth Stereo + 4 speakers Included

WiFi App for Remote Access Included

UV/O3 System Included

DURA-SHIELD® HardCover

400 Gallons

950 LBS Dry Weight

Made In - Northumberland, PA



DURASPORT SERIES

G-2 LEGEND 28

Standard Specifications

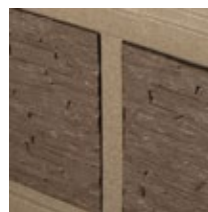
Seating Capacity	6
Jet Count	28 Stainless Steel
Seating	Seats + Lounger
Dimensions	74.5x74.5x32h
Estimated Capacity	Approx 300 USG
Volts	240V/120V
	PLUG & PLAY
Pumps	2BHP
Lights	Underwater LED 8 LED pts
Waterfall	2 LED Water Columns
Ozone	Included
DURA-SHIELD® HardCover	Optional (\$1,384.02)

ANGIE'S PRICE: \$7,846.02

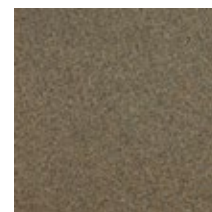
*with Dura-Shield HardCover \$9,230.04
**prices subject to change



Featuring:
8 LED points, LED Water Columns, Cobblestone
with Portabello Rock Panels, Plug & Play



Portabello



Cobblestone

Foldaway Step & Towel Feature
Included!





DURASPORT SERIES

G-2 LEGEND LUXURY 36

Standard Specifications

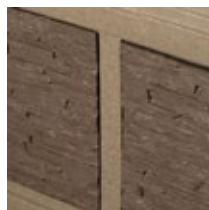
Seating Capacity	6
Jet Count	36 Stainless Steel
Seating	Seats + Lounger
Dimensions	74.5x74.5x32h
Estimated Capacity	Approx 300 USG
Volts	240V
Pumps	5BHP
Lights	Underwater LED 8 LED pts
Waterfall	2 LED Water Columns
Ozone	Included
DURA-SHIELD® HardCover	Optional (\$1,384.02)

ANGIE'S PRICE: \$8,044.02

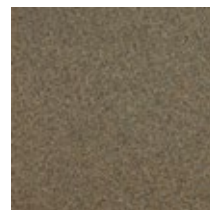
*with Dura-Shield HardCover \$9,428.04
**prices subject to change



Featuring:
8 LED points, LED Water Columns, Cobblestone
with Portobello Rock Panels



Portobello



Cobblestone

Foldaway Step & Towel Feature
Included!



Portabello



Black



Glacier White



Grey Granite



Cobblestone

DURASPORT SERIES G-2B DIAMOND 28

Standard Specifications

Seating Capacity	7
Jet Count	28 SS Two-Tone
Seating	Captain's Chairs
Dimensions	74.5x74.5x32h
Estimated Capacity	Approx 300 USG
Volts	240V/120V
	PLUG & PLAY
Pumps	2BHP
Lights	Underwater LED 8 LED pts
Waterfall	2 LED Water Columns
Ice Bucket/Tray	Included
Ozone	Included
DURA-SHIELD® HardCover	Optional (\$1,384.02)

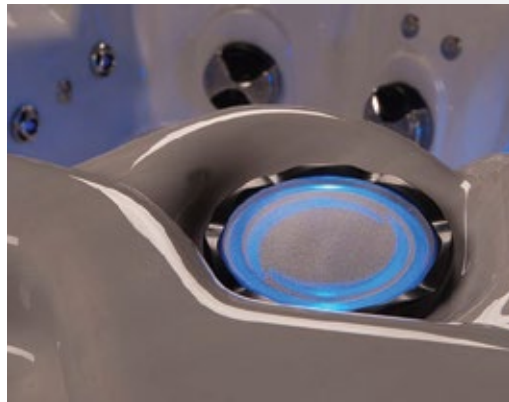
ANGIE'S PRICE: \$8,049.97

*with Dura-Shield HardCover \$9,230.04
**prices subject to change



Featuring:
LED Water Columns and
Built-in Ice Bucket & Tray!





DE SUMMIT S60

PART#: SSDESUS60
SN#: 021921-A34
MSRP: \$23,218.10
ANGIE'S PRICE: \$17,860.08

WARRANTY

DuraShield HardCover: Lifetime Prorated Warranty (2 years hardware & seals)
 Acrylic Shell Surface: 5 years parts & labor
 Spa Cabinet: 7 years parts & labor
 Plumbing & Equipment: 2 years parts
 LED Lighting: 1 year
 Ozonators: 1 year
 Replacement Only: 1 year

*Warranty does not cover damage due to abuse, vandalism, or acts of nature. Warranty is void if electrical connections are not made by a qualified, licensed residential electrician.



PRODUCT SPECS



Coastal Grey/Sterling Silver
 Seating Capacity 7 Bench
 Jet Count 60 SS Two-Tone
 Dimensions 91 x 91 x 36
 Volts 240V
 2 X 5BHP + Circulation Pump
 5" Underwater LED
 "S" LED Controls
 Lighted Cup Holders
 Cabinet LEDs
 3 LED Water Columns
 DuraBase Upgrade Included
 Color Touchscreen Included
 DuraShield Hardcover Included
 Bluetooth Stereo System Included
 WiFi App for Remote Access Included
 UV/O³ System Included
 480 Gallons
 950 LBS Dry Weight
 Made In - Northumberland, PA

FREE DELIVERY WITHIN 9 SURROUNDING COUNTIES
(outside area to be quoted)



Portabello



Black



DURASPORT SERIES G-2B DIAMOND 36

Standard Specifications

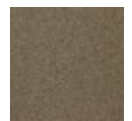
Seating Capacity	7
Jet Count	36 SS Two-Tone
Seating	Captain's Chairs
Dimensions	74.5x74.5x32h
Estimated Capacity	Approx 300 USG
Volts	240V
Pumps	5BHP
Lights	Underwater LED 8 LED pts
Waterfall	2 LED Water Columns
Ice Bucket/Tray	Included
Ozone	Included
DURA-SHIELD® HardCover	Optional (\$1,384.02)



Glacier White



Grey Granite



Cobblestone

ANGIE'S PRICE: \$8,044.02

*with Dura-Shield HardCover \$9,428.04
**prices subject to change



Featuring:
LED Water Columns and
Built-in Ice Bucket & Tray!





Portabello



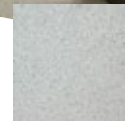
Black



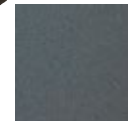
DURASPORT SERIES G-2L DIAMOND 28

Standard Specifications

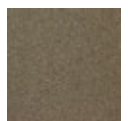
Seating Capacity	6
Jet Count	28 SS Two-Tone
Seating	Captain's Chairs
Dimensions	74.5x74.5x32h
Estimated Capacity	Approx 300 USG
Volts	240V/120V
	PLUG & PLAY
Pumps	2BHP
Lights	Underwater LED 8 LED pts
Waterfall	2 LED Water Columns
Ice Bucket/Tray	Included
Ozone	Included
DURA-SHIELD® HardCover	



Glacier White



Grey Granite



Cobblestone

ANGIE'S PRICE: \$9,472.43

*with Dura-Shield HardCover \$9,230.04

**prices subject to change



Featuring:
LED Water Columns and
Built-in Ice Bucket & Tray!

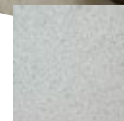




Portabello



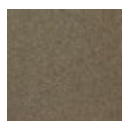
Black



Glacier White



Grey Granite



Cobblestone

DURASPORT SERIES G-2L DIAMOND 36

Standard Specifications

Seating Capacity	6
Jet Count	36 SS Two-Tone
Seating	Captain's Chairs
Dimensions	74.5x74.5x32h
Estimated Capacity	Approx 300 USG
Volts	240V
Pumps	5BHP
Lights	Underwater LED 8 LED pts
Waterfall	2 LED Water Columns
Ice Bucket/Tray	Included
Ozone	Included
DURA-SHIELD® HardCover	Optional (\$1,384.02)

ANGIE'S PRICE: \$8,044.02

*with Dura-Shield HardCover \$9,428.04
**prices subject to change



Featuring:
LED Water Columns and
Built-in Ice Bucket & Tray!





DURASPORT SERIES

G-6

Standard Specifications

Seating Capacity	6
Jet Count	29 Stainless Steel
Seating	Lounger + Capt. Chairs
Dimensions	84x84x34h
Estimated Capacity	Approx 310 USG
Volts	120/240V
	PLUG & PLAY
Pumps	2BHP 2-speed
Lights	Underwater LED
Ozone	Ready
11 LED Points of Light	Optional (TBQ)

ANGIE'S PRICE: \$7,768.02

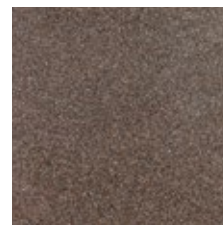
*price does not include delivery or operating instructions - cash & carry only
 **for delivery and operating instructions \$605 - prices subject to change



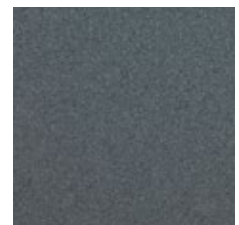
Featuring:
 Stainless Steel Jets, Cascade Waterfall, Wood-Look Access Panels, Heavy-Duty Tapered Insulated Soft Cover, 120/240V Operation.



Cobblestone



Millstone



Gray



EMBARK SERIES

EL40

Standard Specifications

Seating Capacity	5
Jet Count	40 Stainless Steel
Seating	Lounger
Dimensions	74x74x36h
Volts	240V
Pumps	1 x 5BHP
Lights	Underwater LED "S" LED Controls
Waterfall	2 LED Water Columns
Ozone	Included
SoftCover	Included

ANGIE'S PRICE: \$9,677.97

*with Tuscan Sun or Storm Clouds shell upgrade \$9,746.04
**prices subject to change



Featuring Built-In Ice Bucket with Lid/Tray and Dual Water Columns



LED lighted controls



Stainless steel jets



EMBARK SERIES

E60

Standard Specifications

Seating Capacity	6
Jet Count	60 Stainless Steel
Seating	Non-Lounger
Dimensions	85x85x36h
Volts	240V
Pumps	1 x 5BHP + Blower Pump
Lights	Underwater LED "S" LED Controls
Waterfall	Cascade
Ozone	Included
SoftCover	Included

ANGIE'S PRICE: \$10,936.02

*with Tuscan Sun or Storm Clouds shell upgrade \$11,132.04
**prices subject to change



LED lighted controls



Stainless steel jets



Roll-over neck/shoulder jets



PREMIUM SERIES

MADRID 60

Standard Specifications

Seating Capacity	5-6
Jet Count	60 SS Two-Tone including Jumbo Foot Jet
Seating	Lounger
Dimensions	91x91x36h
Volts	240V
Pumps	2 x 5BHP + Diverter
Lights	5" Underwater LED "S" LED Controls Cabinet LEDs
Waterfall	Molded LED Waterfall 2 LED Water Columns
Ozone	Included
DURA-BASE® Upgrade Color	Included
Touchscreen	Included
Bluetooth Stereo + 4 speakers	Optional (\$493.02)
WiFi App for Remote Access	Optional (\$295.02)
UV/O ³ System	Optional (\$196.02)
DURA-SHIELD® HardCover	Optional (\$1,978.02)



ANGIE'S PRICE: \$14,698.02

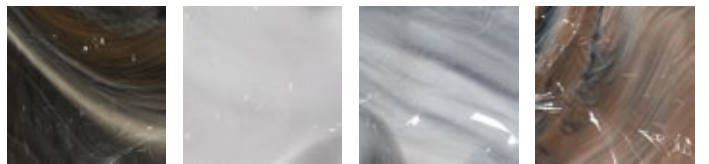
*with all the options \$17,660.10 (Dura-Shield HardCover, UV/O³, Bluetooth, WiFi)
**prices subject to change



Cobblestone

Grey Granite

Millstone



Midnight Canyon

Sterling Silver

Storm Clouds

Tuscan Sun





SUMMIT SERIES

\$40

Standard Specifications

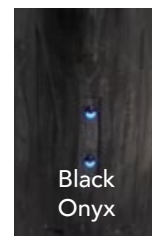
Seating Capacity	6
Jet Count	40 SS Two-Tone
Seating	Non-Lounger
Dimensions	74x74x36h
Volts	240V
Pumps	5BHP 2-spd + Circ Pump
Lights	Underwater LED "S" LED Controls Cabinet LEDs
Waterfall	2 LED Water Columns
Ozone	Included
DURA-BASE® Upgrade Color	Included
Touchscreen DURA-SHIELD®	Included
HardCover Bluetooth Stereo System	Included
WiFi App for Remote Access	Optional (\$493.02)
UV/O ³ System	Optional (\$295.02)
	Optional (\$196.02)

ANGIE'S PRICE: \$12,916.02

*with all the options \$13,900.08 (UV /O3, Bluetooth, WiFi)
**prices subject to change



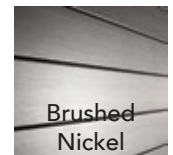
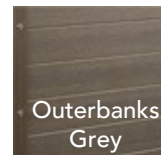
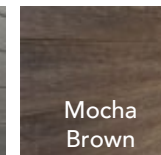
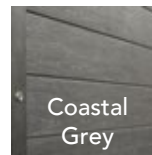
Corners:



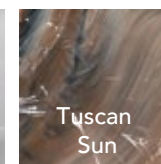
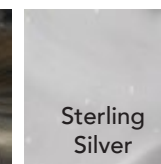
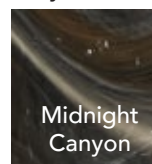
Cabinet/Corner Options:

- Mocha Brown/Coastal Grey Standard \$592.02
- Brushed Nickel (Black Onyx/Carbon Fiber) \$394.02
- Coastal Grey (Carbon Fiber) \$394.02
- Outerbanks Grey (Black Onyx) \$394.02

Cabinets:



Acrylic Shells:





SUMMIT SERIES

SL40

Standard Specifications

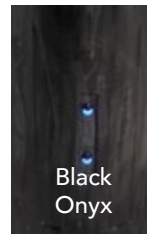
Seating Capacity	6
Jet Count	40 SS Two-Tone
Seating	Lounger
Dimensions	74x74x36h
Volts	240V
Pumps	5BHP 2-spd + Circ Pump
Lights	Underwater LED "S" LED Controls Cabinet LEDs
Waterfall	2 LED Water Columns
Ozone	Included
DURA-BASE® Upgrade	Included
Color Touchscreen	Included
DURA-SHIELD® HardCover	Included
Bluetooth Stereo System	Optional (\$493.02)
WiFi App for Remote Access	Optional (\$295.02)
UV/O ³ System	Optional (\$196.02)

ANGIE'S PRICE: \$12,916.02

*with all the options \$13,900.08 (UV /O3, Bluetooth, WiFi)
**prices subject to change



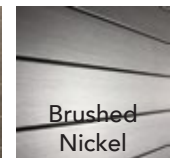
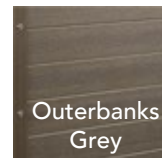
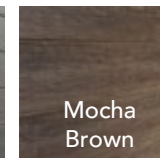
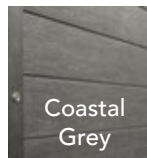
Corners:



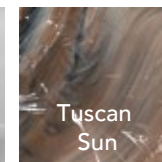
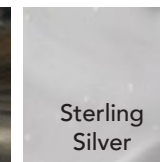
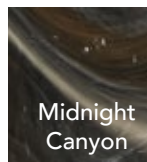
Cabinet/Corner Options:

- Mocha Brown/Coastal Grey Standard
- Brushed Nickel (Black Onyx/Carbon Fiber) \$592.02
- Coastal Grey (Carbon Fiber) \$394.02
- Outerbanks Grey (Black Onyx) \$394.02

Cabinets:



Acrylic Shells:





SUMMIT SERIES

SL50

Standard Specifications

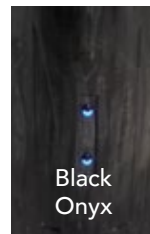
Seating Capacity	5
Jet Count	50 SS Two-Tone
Seating	Lounger
Dimensions	85x85x36h
Volts	240V
Pumps	2 x 5BHP + Circ Pump
Lights	Underwater LED "S" LED Controls Lighted Cup Holders Cabinet LEDs
Waterfall	3 LED Water Columns
Ozone	Included
DURA-BASE® Upgrade	Included
Color Touchscreen	Included
DURA-SHIELD® HardCover	Included
Bluetooth Stereo System	Optional (\$493.02)
WiFi App for Remote Access	Optional (\$295.02)
UV/O ³ System	Optional (\$196.02)

ANGIE'S PRICE: \$17,606.33

*with all the options \$16,672.08 (UV /O3, Bluetooth, WiFi)
**prices subject to change



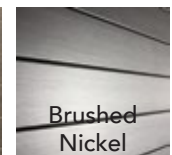
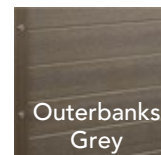
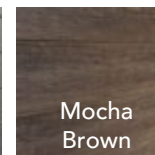
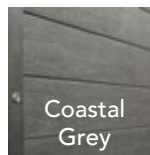
Corners:



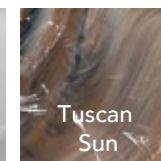
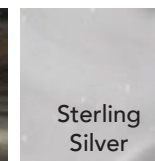
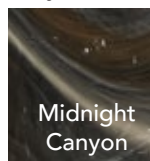
Cabinet/Corner Options:

- Mocha Brown/Coastal Grey Standard
- Brushed Nickel (Black Onyx/Carbon Fiber) \$592.02
- Coastal Grey (Carbon Fiber) \$394.02
- Outerbanks Grey (Black Onyx) \$394.02

Cabinets:



Acrylic Shells:





SUMMIT SERIES

\$60

Standard Specifications

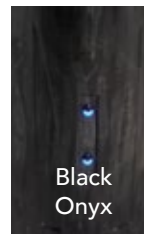
Seating Capacity	7
Jet Count	60 SS Two-Tone
Seating	Non Lounger
Dimensions	91x91x36h
Volts	240V
Pumps	2 x 5BHP + Circ Pump
Lights	Underwater LED "S" LED Controls Lighted Cup Holders Cabinet LEDs
Waterfall	3 LED Water Columns
Ozone	Included
DURA-BASE® Upgrade	Included
Color Touchscreen	Included
DURA-SHIELD® HardCover	Included
Bluetooth Stereo System	Optional (\$493.02)
WiFi App for Remote Access	Optional (\$295.02)
UV/O ³ System	Optional (\$196.02)

ANGIE'S PRICE: \$16,876.02

*with all the options \$17,860.08 (UV /O3, Bluetooth, WiFi)
**prices subject to change



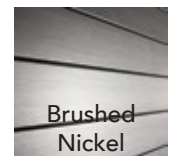
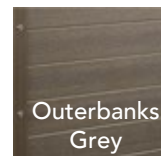
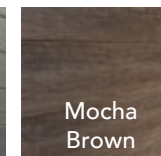
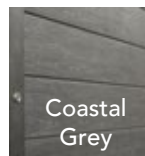
Corners:



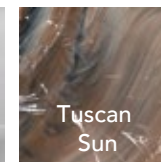
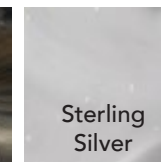
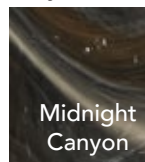
Cabinet/Corner Options:

Mocha Brown/Coastal Grey
Standard
Brushed Nickel (Black Onyx/Carbon Fiber)
\$592.02
Coastal Grey (Carbon Fiber)
\$394.02
Outerbanks Grey (Black Onyx)
\$394.02

Cabinets:



Acrylic Shells:





SUMMIT SERIES

SL60

Standard Specifications

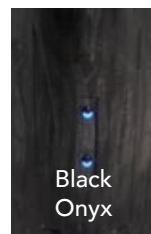
Seating Capacity	6
Jet Count	60 SS Two-Tone
Seating	Lounger
Dimensions	91x91x36h
Volts	240V
Pumps	2 x 5BHP + Circ Pump
Lights	Underwater LED "S" LED Controls Lighted Cup Holders Cabinet LEDs
Waterfall	3 LED Water Columns
Ozone	Included
DURA-BASE® Upgrade	Included
Color Touchscreen	Included
DURA-SHIELD® HardCover	Included
Bluetooth Stereo System	Optional (\$493.02)
WiFi App for Remote Access	Optional (\$295.02)
UV/O ³ System	Optional (\$196.02)

ANGIE'S PRICE: \$18,827.33

*with all the options \$17,860.08 (UV /O3, Bluetooth, WiFi)
**prices subject to change



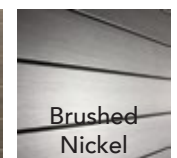
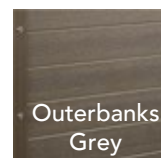
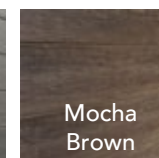
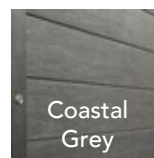
Corners:



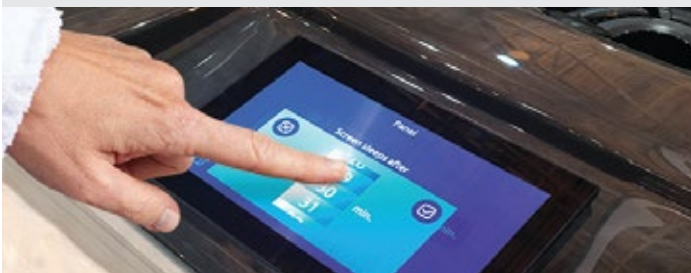
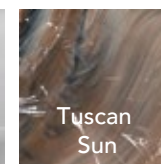
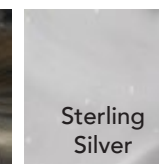
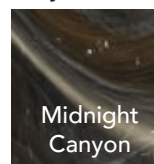
Cabinet/Corner Options:

- Mocha Brown/Coastal Grey Standard \$592.02
- Brushed Nickel (Black Onyx/Carbon Fiber) \$394.02
- Coastal Grey (Carbon Fiber) \$394.02
- Outerbanks Grey (Black Onyx) \$394.02

Cabinets:



Acrylic Shells:



FAQS

YOUR NEXT STEPS

HOW LONG DO SPECIAL ORDERS TAKE TO GET IN?

As of September 2020, due to Covid-19 it takes 16-19 weeks for special orders to come in. This is subject to change.

HOW SOON CAN IT BE DELIVERED AFTER PURCHASE?

Once the spa is shipped to our warehouse and balance paid in full we can have it delivered within 48 hours by Here To There Movers. Monday-Friday deliveries preferred.

WHAT DO I NEED TO DO BEFORE MY SPA IS DELIVERED?

Before your spa is delivered, you'll need to measure the spa site location. Also take pictures of the spa site location and path to the site. This information will need to be sent to us. We will then send it to Here To There Movers for the spa delivery.

WHEN SHOULD I SCHEDULE AN ELECTRICIAN TO COME OUT?

This will need to be done after the spa is delivered to your home. Angie's Pool & Spa does not do any electrical work.

CAN I HAVE MY ELECTRICIAN HOOK IT UP?

Yes. However, they must provide us proof that they're licensed and follow the spa electrical requirements. They will be responsible not only for running electrical to the spa but also the wiring of the spa. We recommend using one of our preferred licensed electricians to ensure it is done properly so that your warranty is not voided.

WHEN SHOULD I SET UP OPERATING INSTRUCTIONS WITH YOU?

After the electrical is hooked up and the spa is filled and running.

KNOW WHAT YOU SHOULD

YOUR NEXT STEPS

ACCESSIBILITY

We do require access to all four sides of the spa in order for our technicians to work on them. We recommend not pushing your spa up against anything or dropping it into the ground or deck.

ELECTRICAL REQUIREMENTS

You are responsible for making sure the Electrical Requirements are met for the spa and that the electrician provides us proof of their license. The warranty of the spa depends on the electrical being done properly by a licensed electrician.

WARRANTY

Angie's Pool & Spa honors a one year workmanship warranty starting the date of the spa being delivered to your home. If a manufacture defect is found it will be submitted to be reviewed by the manufacture themselves. Failing to have a licensed electrician hook up the spa voids both of these warranties.

CARTRIDGE FILTER CARE

Good filtration is the key to clean and clear water. We recommend cleaning your cartridge at least every two weeks. It will also help having an extra set of filters to put in your spa while you wait for the other filters to completely dry.

WATER CARE

Along with filtration, water chemistry is just as important. It's important to have your spa water professionally tested at least every two weeks. You should test more often at home with a test kit once or twice a week.

ORDER

YOUR NEXT STEPS

INITIAL CONTACT

Reach out to us via email, website chat or by phone. Whatever questions you have we're here to answer them 24/7.

VIDEO TOUR

Is there a showroom model that stood out to you? Set up a video chat with one of our associates and we can give you a tour of the hot tubs features live.

GET A QUOTE

Whether you want to special order a custom spa or interested in a showroom tub we can work up a quote for you.

PURCHASE

Happy with your quote? We're happy you chose us for your hot tub. Call us to finalize your purchase.

SCHEDULE DELIVERY & OPERATING INSTRUCTIONS

Next we will coordinate with your schedule to deliver your spa directly to your backyard. Once it's up and running one of our Pool & Hot Tub Alliance Certified Spa Technicians will set up a time to show you how to properly operate and maintain your spa.

ENJOY

Last step is the fun part. Your spa will be warm and waiting for you to enjoy everyday.

BACKYARD VIEWS

BETTER WITH A HOT TUB

3130 Meridian Parke Dr. Suite A
Greenwood, IN 46142

www.angiespools.com

317.881.1257

Angie's

POOL & SPA, INC.

Custom In-Ground Swimming Pools